



5 ANTONY CLOSE, BISHOPSTONE, BN25 2SY

£325,000

An opportunity to acquire a semi-detached two bedroom bungalow, situated in an enviable and elevated position, backing onto farmland. Superb views across rooftops towards Seaford Bay and to Newhaven can be enjoyed from the front elevation.

The property has the benefit of a garage in an adjacent compound. The open plan front garden is a good size and adjoins a central pathway providing pedestrian access to other bungalows in the cul-de-sac.

The accommodation, which requires some updating, comprises Upvc double glazed entrance porch, entrance hall, living room, kitchen, two bedrooms, bathroom and separate W.C.

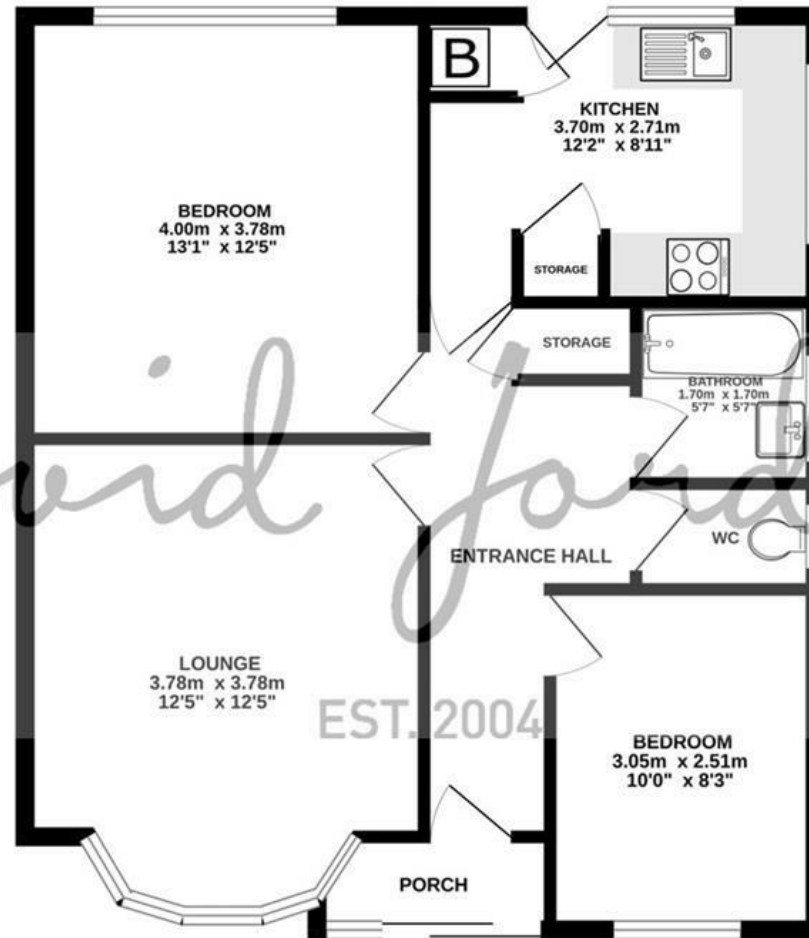
Further benefits include double glazed windows and external doors together with gas central heating.

Offered for sale with immediate vacant possession and no onward chain.

- TWO BEDROOMS
- SEMI-DETACHED BUNGALOW
- SITUATED IN A QUIET CUL-DE-SAC
- LOUNGE
- SEPARATE W.C
- BATHROOM
- REAR GARDEN BACKING ONTO FARMLAND
- GARAGE SITUATED IN A BLOCK
- DISTANT SEA VIEWS
- OFFERED FOR SALE WITH NO ONWARD CHAIN



GROUND FLOOR
63.6 sq.m. (685 sq.ft.) approx.



5 ANTONY CLOSE BISHOPSTONE SEAFORD

TOTAL FLOOR AREA : 63.6 sq.m. (685 sq.ft.) approx.

Whilst every attempt has been made to ensure the accuracy of the floorplan contained here, measurements of doors, windows, rooms and any other items are approximate and no responsibility is taken for any error, omission or mis-statement. This plan is for illustrative purposes only and should be used as such by any prospective purchaser. The services, systems and appliances shown have not been tested and no guarantee as to their operability or efficiency can be given.
Made with Metropix ©2025



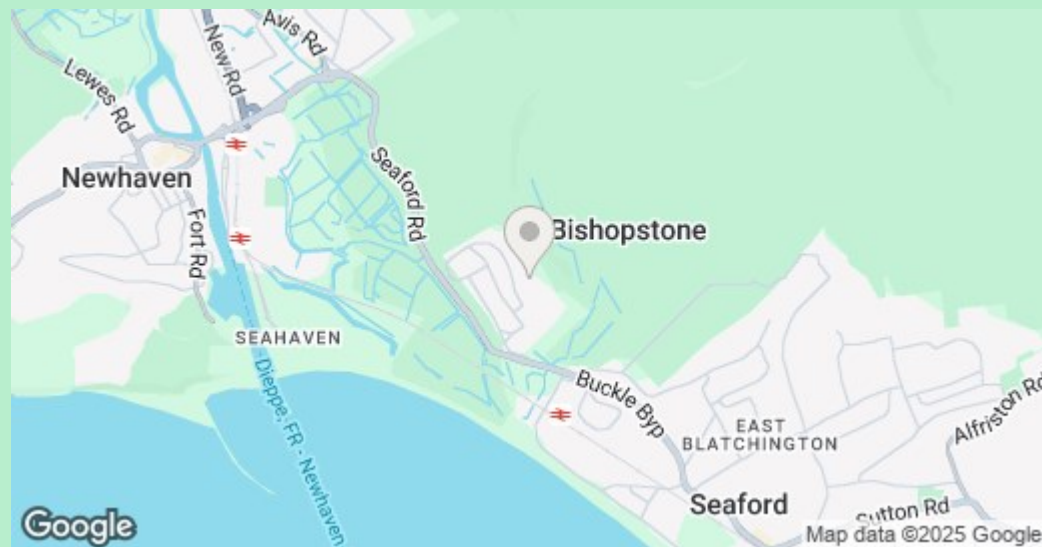
COUNCIL TAX BAND

Local Authority: Lewes District Council

Council Tax Band: C

ENERGY PERFORMANCE CERTIFICATES (EPC)

Energy Efficiency Rating: C



DISCLAIMER

Money Laundering Regulations 2017: Intending purchasers will be asked to produce identification documentation upon acceptance of any offer. We would ask for your cooperation in producing such in order that there will not be a delay in agreeing the sale.

General: Whilst we endeavour to make our sales particulars fair, accurate and reliable they are only a general guide to the property and accordingly if there is any point which is of particular importance to you please contact the office and we will be pleased to check the position for you. Buyers must check the availability of any property and make an appointment to view, before embarking on any journey to see a property. Items shown in photographs are NOT included unless specifically mentioned within the sales particulars. They may however be available by separate negotiation.

Measurements: These approximate room sizes are only intended as general guidance. You must verify the dimensions carefully before ordering carpets or any built in furniture.

Services: Please note we have not tested any apparatus, equipment, fixtures and fittings or services and so cannot verify that they are in working order or fit for the purpose. A Buyer is advised to obtain verification from their Solicitor or Surveyor. References to the Tenure of a Property are based on information supplied by the Seller. The Agent has not had sight of the title documents. A Buyer is advised to obtain verification from their Solicitor. These particulars are issued in good faith but do not constitute representations of fact or form part of any offer or contract.

01323 898414

sales@davidjordan.co.uk

davidjordan.co.uk

David Jordan

EST. 2004